



# Oaklands Farm Solar Park

## Consultation Report

Appendix 11.4 - Section 47 Notice Published in Situ in Relevant  
Papers

January 2024

**Applicant:** Oaklands Farm Solar Ltd

**Document Reference:** EN010122/APP/5.2

**Date:** January 2024

**Pursuant to:** APFP Regulation: 5(2)(q)

**Author:** Thirty4/7 Communications Ltd

# Contents

1. Section 47 Notice published in situ in relevant papers .....	3
Burton Mail – 7 April 2022 – Public Notices .....	3
Derby Telegraph – 7 April 2022 – Public Notices .....	4
Burton Mail – 7 April – Run of paper advert .....	5
Derby Telegraph – 7 April 2022 – Run of Paper advert .....	6
Derbyshire Live (Covering Burton Mail & Derby Telegraph) – 7 April 2022 to 30 April 2022 - Online Adverts ..	7

# 1. Section 47 Notice published in situ in relevant papers

Burton Mail – 7 April 2022 – Public Notices

facebook.com/BurtonNews

THURSDAY, APRIL 7, 2022 BURTON MAIL 33

## Public Notices

### Public Notices

#### Section 47 Planning Act 2008

#### Notification of Statement of Community Consultation for Oaklands Farm Solar Project

**Notice publishing a Statement of Community Consultation**  
Oaklands Farm Solar Limited, a wholly owned subsidiary of BayWa r.e. UK Ltd, of 22 Chancery Lane, London, WC2A 1LS (the "Applicant") proposes to make an application for a Development Consent Order (DCO) under section 37 of the Planning Act 2008 to the Secretary of State for Business, Energy and Industrial Strategy to authorise the construction, operation and maintenance of a solar farm and storage (the "Project").

The DCO would authorise the construction, operation and maintenance of a solar photovoltaic (PV) electricity generating and storage facility at Oaklands Farm and Park Farm, situated on land between Walton on Trent and Roalston, South Derbyshire, along with all associated infrastructure including a grid connection at the former Drakelow power station.

The Project is an Environmental Impact Assessment (EIA) development as defined by the Infrastructure Planning (EIA) Regulations 2017. It will therefore require an Environmental Impact Assessment under the EIA regulations and an Environmental Statement (ES) will accompany the application. Before submitting the Application, in accordance with Section 47 of the Planning Act 2008 we must publish a document called a Statement of Community Consultation ("SoCC") setting out how we will consult with the local community about the Project. We must also make the SoCC available for inspection by the public and publish this notice stating where and when the SoCC can be inspected.

We have produced a SoCC in respect of the Project, which can be viewed, free of charge, on our Project webpage from 9am 7th April 2022. The SoCC can be viewed, free of charge, at [www.baywa-re.co.uk/en/sdar/oaklands-solar-farm](http://www.baywa-re.co.uk/en/sdar/oaklands-solar-farm) or in hard copy at the following deposit locations:

SoCC Deposit Locations	Opening Times**
<b>Swadincote Library and Information Centre</b> Swadincote Library Civic Way Swadincote Derbyshire DE11 3JG Email <a href="mailto:swadincote.library@derbyshire.gov.uk">swadincote.library@derbyshire.gov.uk</a>	Monday: 9:30am - 5pm Tuesday: 9:30am - 5pm Wednesday: 9:30am - 5pm Thursday: 9:30am - 7pm Friday: 9:30am - 5pm Saturday: 9:30am - 4pm Sunday: Closed
<b>Barton Under Needwood Community Library</b> Barton Under Needwood Library Dunsell Road Barton-under-Needwood Staffordshire, DE13 5AX Email: <a href="mailto:barton.library@staffordshire.gov.uk">barton.library@staffordshire.gov.uk</a>	Monday: 10am - 12pm / 2pm - 5pm Tuesday: Closed Wednesday: 10am - 12pm / 2pm - 5pm Thursday: 10am - 12pm / 2pm - 5pm Friday: 10am - 2pm Saturday: 10am - 1pm Sunday: Closed
<b>Barton Library</b> Barton Library Riverside, Barton upon Trent, Staffordshire, DE14 1AH Email: <a href="mailto:barton.library@staffordshire.gov.uk">barton.library@staffordshire.gov.uk</a>	Monday: 9am - 6pm Tuesday: 9am - 5pm Wednesday: 9am - 5pm Thursday: 9am - 7pm Friday: 9am - 5pm Saturday: 8:30am - 4:30pm Sunday: Closed

\*\*The opening times of these organisations are dependent on and are governed by them and may be subject to change. Covid restrictions may apply.

#### The Consultation

The Applicant has a duty to consult with local communities before the application is submitted to the Planning Inspectorate. The Applicant is also required to produce a Consultation Report detailing how the public's views have been taken into consideration and how the consultation requirements of the Act have been complied with. The SoCC will remain on the website for the duration of the consultation period.

Following publication of the SoCC, BayWa will undertake a statutory period of consultation and invite comments on the Project between the 21st April 2022 and the 6th June 2022.

#### Have your say

Details of the statutory consultation and how to be involved are set out in the SoCC. Any person may comment on the Project.

**Please note:** consultation documents will only be available from the start of the consultation.

If you have any queries about the consultation process you can call - **1800 699 0081** Freephone - Monday to Friday 9am to 5pm (excluding public holidays)

Show the SoCC or associated documents be required in a different format (e.g. large text, please contact the Applicant using any of the methods above.



Book online today  
to get your advert seen  
by local people



Local pick up,  
what a great idea

marketplacelive.co.uk  
Your local place to buy and sell

marketplacelive.co.uk  
Your local place to buy and sell



Public Notices

**THE DERBYSHIRE COUNTY COUNCIL WESTON ROAD AND SHARDLOW ROAD - ASTON ON TRENT, DOLES LANE, THE GREEN AND LOWER GREEN - FINDEN, WILKINGTON ROAD AND OLD STATION CLOSE - FTWALL, BEECHAY FINE - WILKINGTON, HIGH STREET, BROOK END, MONSON LANE AND MILTON ROAD - REPTON, WOODVILLE ROAD - OVERSEAL (WAITING RESTRICTIONS) ORDER 2022**

Notice is hereby given that, on the Thirty First Day of March 2022 the Derbyshire County Council made an Order under the Road Traffic Regulation Act 1984. The Order will come into operation on the Eleventh Day of April 2022 and its effect is:

**NOT WAITING AT ANY TIME**

**Wilton Road, Sheriff North side**  
From its junction with Main Street in an easterly direction for a distance of 10 metres.

**Lower Green, Finden West side**  
From its junction with Brook Close in a northerly direction for a distance of 42 metres.

**East side**  
From its junction with The Green in a southerly direction for a distance of 33 metres.

**The Green, Finden South side**  
From its junction with Main Street in an easterly direction for a distance of 10 metres.

**North side**  
From its junction with Main Street in an easterly direction for a distance of 10 metres.

**West side**  
From its junction with Main Street in a northerly direction for a distance of 15 metres.

**North side**  
From its junction with The Green in an easterly direction for a distance of 15 metres.

**North side**  
From its junction with The Green in a northerly direction for a distance of 15 metres.

**Doles Lane, Finden West side**  
From a point 74.5m from its junction with Main Street in a northerly direction for a distance of 27 metres.

**Old Station Close, Sheriff West side**  
From its junction with Hilton Road in a southerly direction for a distance of 123 metres.

**East side**  
From its junction with Hilton Road in a southerly direction for a distance of 79 metres.

**Beech Close, Wilkington North side**  
From its junction with Repton Road in an easterly direction for a distance of 35 metres.

**South side**  
From its junction with Repton Road in an easterly direction for a distance of 39 metres.

**Wilton Road, Aston on Trent North side**  
From its junction with Derby Road in a westerly direction for a distance of 10 metres.

**South side**  
From its junction with Shardlow Road in a westerly direction for a distance of 10 metres.

**Derby Road, Aston on Trent West side**  
From its junction with Weston Road in a northerly direction for a distance of 5 metres.

**East side**  
From its junction with The Green in a northerly direction for a distance of 10 metres.

**Shardlow Road, Aston on Trent East side**  
From its junction with Weston Road in a southerly direction for a distance of 12 metres.

**Brook End, Repton South side**  
From its junction with Milton Road in a westerly direction for a distance of 9 metres.

**North side**  
From its junction with Milton Road in a westerly direction for a distance of 4 metres.

**Milton Road, Repton West side**  
From its junction with Brook End in a southerly direction for a distance of 14.5 metres.

**Monson Lane, Repton East side**  
From its junction with Brook End in a southerly direction for a distance of 14.5 metres.

**Monson Lane, Repton North side**  
From its junction with Brook End in an easterly direction for a distance of 19 metres.

**Monson Lane, Repton South side**  
From its junction with Milton Road in an easterly direction for a distance of 13 metres.

**Milton Road, Repton West side**  
From a point 44 metres from its junction with Brook End in a southerly direction for a distance of 41 metres.

**NO STOPPING ON SCHOOL EXTRA MARKINGS**  
MONDAY-FRIDAY 8.00AM-9.30AM and 2.30PM-4.00PM  
SATURDAY 9.00AM-1.00PM

**REVOCAATION OF LIMITED WAITING 40 MINUTES NO RETURN WITHIN 30 MINUTES MON-SAT 9.00AM-6.00PM**  
High Street, Repton East side  
From a point 19 metres south of its junction with Brook End in a southerly direction for a distance of 21 metres.

**East side**  
From a point 46 metres south of its junction with Brook End in a southerly direction for a distance of 18 metres.

**East side**  
From a point 38 metres south of its junction with Askew Grove in a southerly direction for a distance of 18.5 metres.

**East side**  
From a point 48.6 metres south of its junction with Askew Grove in a southerly direction for a distance of 6 metres.

**East side**  
From a point 92.5 metres south of its junction with Askew Grove in a southerly direction for a distance of 11 metres.

**East side**  
From a point 77.5 metres south of its junction with Askew Grove in a southerly direction for a distance of 22.5 metres.

**East side**  
From a point 114 metres south of its junction with Askew Grove in a southerly direction for a distance of 13 metres.  
A copy of the Order and documents giving more detailed particulars of the Order are available for inspection at the offices of the Derbyshire County Council, Main Reception, County Hall, Matlock between 9am and 5pm, Monday to Friday unless otherwise stated. The Order is made and it is hereby notified that the Derbyshire County Council, Derbyshire, is authorised to make and enforce any regulations made under it. It has not been complied with may, within 6 weeks from 19th May 2022 make application for the purpose to the High Court. Dated: 7th April 2022  
Chris Hemming, Executive Director - Place, Derbyshire County Council, County Hall, Matlock, DE4 3EG

Public Notices

Public Notices

**Section 47 Planning Act 2008 Notification of Statement of Community Consultation for Oaklands Farm Solar Project**  
Notice publicising a Statement of Community Consultation  
Oaklands Farm Solar Limited, a wholly owned subsidiary of BayWa r.e. UK Ltd, of 22 Chaucery Lane, London, WC2A 1LS (the "Applicant") proposes to make an application for a Development Consent Order (DCO) under section 37 of the Planning Act 2008 to the Secretary of State for Business, Energy and Industrial Strategy to authorise the construction, operation and maintenance of a solar farm and storage (the "Project"). The DCO would authorise the construction, operation and maintenance of a solar photovoltaic (PV) electricity generating and storage facility at Oaklands Farm and Park Farm, situated on land between Walton on Trent and Repton, South Derbyshire, along with all associated infrastructure including a grid connection at the former Desklow power station. The Project is an Environmental Impact Assessment (EIA) development as defined by the Infrastructure Planning (EIA) Regulations 2017. It will therefore require an Environmental Impact Assessment under the EIA regulations and an Environmental Statement (ES) will accompany the application. Before submitting the Application, in accordance with Section 47 of the Planning Act 2008 we must publish a document called a Statement of Community Consultation ("SoCC") setting out how we will consult with the local community about the Project. We must also make the SoCC available for inspection by the public and publish this notice stating where and when the SoCC can be inspected. We have produced a SoCC in respect of the Project, which can be viewed, free of charge, on our Project webpage from 9am 7th April 2022. The SoCC can be viewed, free of charge, at [www.baywa-re.co.uk/efrac/oaklands-solar-farm](http://www.baywa-re.co.uk/efrac/oaklands-solar-farm) or in hard copy at the following deposit locations:

SoCC Deposit Locations	Opening Times**
<b>Swadlowcliffe Library and Information Centre</b>	Monday: 9:30am - 5pm Tuesday: 9:30am - 5pm Wednesday: 9:30am - 5pm Thursday: 9:30am - 7pm Friday: 9:30am - 5pm Saturday: 9:30am - 4pm Sunday: Closed
<b>Swadlowcliffe Library</b>	Monday: 10am - 12pm / 2pm - 5pm Tuesday: Closed Wednesday: 10am - 12pm / 2pm - 5pm Thursday: 10am - 12pm / 2pm - 5pm Friday: 10am - 2pm Saturday: 10am - 1pm Sunday: Closed
<b>Swadlowcliffe Library</b>	Monday: 9am - 6pm Tuesday: 9am - 5pm Wednesday: 9am - 5pm Thursday: 9am - 7pm Friday: 9am - 5pm Saturday: 8:30am - 4:30pm Sunday: Closed

\*The opening times of these organisations are dependent on and are governed by them and may be subject to change. Covid restrictions may apply.

**The Consultation**  
The Applicant has a duty to consult with local communities before the application is submitted to the Planning Inspectorate. The Applicant is also required to produce a Consultation Report detailing how the public's views have been taken into consideration and how the consultation requirements of the Act have been complied with. The SoCC will remain on the website for the duration of the consultation period. Following publication of the SoCC, BayWa will undertake a statutory period of consultation and invite comments on the Project between the 21st April 2022 and the 6th June 2022.  
**How you can say**  
Details of the statutory consultation and how to be involved are set out in the SoCC. Any person may comment on the Project. **Please note:** consultation documents will only be available from the start of the consultation. If you have any queries about the consultation process you can call: 0800 695 0061 (Freephone - Monday to Friday 9am to 5pm including public holidays). Should the SoCC or associated documents be required in a different format (e.g. large text), please contact the Applicant using any of the methods above.

**APPLICATION FOR THE GRANT OF A PREMISES LICENCE**

Notice is given that Sylo Productions Limited has applied to Amber Valley Council for a Premises Licence in respect of premises known as Coneygrey Farm at Coneygrey Farm, Pentrich, Derbyshire, DE5 3RJ for the sale by retail of alcohol for consumption off the premises, the supply of alcohol, the provision of live music, recorded music, dancing and late night refreshments. The application if granted, will allow such licensable activities to take place at the following times: Thursday 28/07/22 @ 12.00 to Thursday 28/07/22 @ 24.00, Friday 29/07/22 @ 12.00 to Saturday 30/07/22 @ 02.00, Saturday 30/07/22 @ 12.00 to Sunday 31/07/22 @ 02.00. If you wish to make any representations in connection with this application, you must write to: The Licensing Clerk, Amber Valley Borough Council, PO Box 15, Town Hall, Ripley, Derbyshire, DE5 3XE on or before the 04.05.2022. The Council's Licensing Register where a record of this application may be inspected is kept at the above address. The register may also be viewed online at: [www.ambervalley.gov.uk](http://www.ambervalley.gov.uk). It is an offence knowingly or recklessly to make a false statement in connection with an application for the grant of a Premises Licence. The maximum penalty for such an offence is unlimited.

**DERBYSHIRE COUNTY COUNCIL TEMPORARY ROAD CLOSURE VARIOUS ROADS, AMBER VALLEY**

WHEN: For a period of no more than 5 separate days for each individual road between 18th April and 9th July 2022.  
WHERE: A636 Derby Road, Langley, MI, A638 New Derby Road (northbound cut A610 to Linkin Road), Langley MI, Gores (Whitwale, Lancelo Wilebrock Lane), Bapoc, Old Hill Lane (High Lane to Shirborne Villa), Bolsover, Shaw's Hill, Bury Hill, Chapel Hill (between Road to New Road), Acoorwastley, Strutt Street (King Street to A639), Bapoc.  
REASON: To facilitate carriageway surface dressing and associated works.  
ALTERNATIVE ROUTE: Appropriate diversion routes will be designed accordingly.  
Notice boards informing of the actual dates for surface dressing will be placed on site 1 week in advance.  
Access will be maintained, whenever reasonably possible, on the affected length of road. The road will re-open as soon as the work is finished. This may be earlier than advertised.  
Derbyshire County Council apologises for any inconvenience caused while work takes place. Anyone needing further information should ring Call Derbyshire on 01629 533190.  
The County Council intends to make an Order under Section 14 of the Road Traffic Regulation Act 1984 (as amended) to prohibit its use by traffic.  
Chris Hemming, Executive Director - Place Department, County Hall, MATLOCK DE4 3EG

**DERBYSHIRE COUNTY COUNCIL TEMPORARY ROAD CLOSURE BURLAND GREEN LANE, WESTON UNDERWOOD**

WHEN: 11th April 2022 (09:30 to 15:30)  
WHERE: Burland Green Lane, Weston Underwood between its junction with Bultham Lane and a point 600m northwest of the junction.  
REASON: To facilitate telegraph pole inspections.  
ALTERNATIVE ROUTE: Kedleston Road, Cumber Hills Road, Woodall Lane and vicar versa.  
Access will be maintained, whenever reasonably possible, on the affected length of road. The road will re-open as soon as the work is finished. This may be earlier than advertised.  
Derbyshire County Council apologises for any inconvenience caused while work takes place. Anyone needing further information should ring Call Derbyshire on 01629 533190.  
The County Council has made an Order under Section 14 of the Road Traffic Regulation Act 1984 (as amended) to prohibit its use by traffic.  
Chris Hemming, Executive Director - Place Department, County Hall, MATLOCK DE4 3EG

**DERBYSHIRE COUNTY COUNCIL TEMPORARY ROAD CLOSURE YELDERSLEY LANE, EDNASTON**

WHEN: 29th April 2022 to 30th April 2022 (between 0800 and 1600 each day)  
WHERE: Yeldersley Lane, Ednaston between junction with A52 and junction with Dugwell Lane.  
REASON: To facilitate removal of A5th detour trees.  
ALTERNATIVE ROUTE: Yeldersley Lane, Lady Hole Lane, Derby Road, Shirley Common, Painters Lane and vicar versa.  
Access will be maintained, whenever reasonably possible, on the affected length of road. The road will re-open as soon as the work is finished. This may be earlier than advertised.  
Derbyshire County Council apologises for any inconvenience caused while work takes place. Anyone needing further information should ring Call Derbyshire on 01629 533190.  
The County Council intends to make an Order under Section 14 of the Road Traffic Regulation Act 1984 (as amended) to prohibit its use by traffic.  
Chris Hemming, Executive Director - Place Department, County Hall, MATLOCK DE4 3EG

**DERBYSHIRE COUNTY COUNCIL TEMPORARY ROAD CLOSURE ALFRETON ROAD ACCESS ROAD, LITTLE EATON**

WHEN: 11th April 2022 to 22nd April 2022  
WHERE: Alfreton Road Access Road, Little Eaton between its northernmost junction with B6179 Alfreton Road and a point 25m south of that junction (outside No. 15 & 6 outside No. 148).  
REASON: To facilitate power works.  
ALTERNATIVE ROUTE: B6179 Alfreton Road.  
Access will be maintained, whenever reasonably possible, on the affected length of road. The road will re-open as soon as the work is finished. This may be earlier than advertised.  
Derbyshire County Council apologises for any inconvenience caused while work takes place. Anyone needing further information should ring Call Derbyshire on 01629 533190.  
The County Council has made an Order under Section 14 of the Road Traffic Regulation Act 1984 (as amended) to prohibit its use by traffic.  
Chris Hemming, Executive Director - Place Department, County Hall, MATLOCK DE4 3EG

**DERBYSHIRE COUNTY COUNCIL TEMPORARY 30MPH SPEED LIMIT SNELSMOOR LANE, CHELLASTON**

WHEN: 18th April 2022 to 30th December 2022  
WHERE: It will be necessary to prohibit traffic from travelling at a speed in excess of 30mph on Snelmsmoor Lane, Breton Moor, between a point 5m (22yds) south of its junction with Llewellyn Road, and a point 1950m (1039yds) southwest of that junction, at total distance of 1955m (1012yds).  
REASON: To facilitate a major realignment works.  
The restriction will be in force for the time stated or until the work is finished. This may be earlier than advertised.  
Derbyshire County Council apologises for any inconvenience caused while work takes place. Anyone needing further information should ring Call Derbyshire on 01629 533190.  
The County Council intends to make an Order under Section 14 of the Road Traffic Regulation Act 1984 (as amended) to prohibit traffic from travelling at a speed in excess of 30mph.  
Chris Hemming, Executive Director - Place Department, County Hall, MATLOCK DE4 3EG

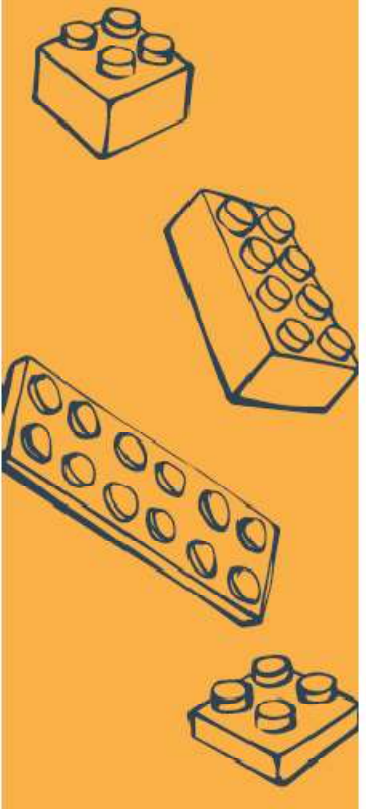
**DERBYSHIRE COUNTY COUNCIL TEMPORARY ROAD CLOSURE JOLLY LANE, ATLOW**

WHEN: 25th April 2022 to 27th April 2022 (09:00 to 16:00)  
WHERE: Jolly Lane, Atlow for a distance of 150 metres between junction with Mill Lane and Brook Farm.  
REASON: To facilitate BT pole replacements.  
ALTERNATIVE ROUTE: Furlong Lane, Turfowells Lane, Dog Lane, Birch, Mill Lane, A Low Lane, Jolly Lane and vicar versa.  
Access will be maintained, whenever reasonably possible, on the affected length of road. The road will re-open as soon as the work is finished. This may be earlier than advertised.  
Derbyshire County Council apologises for any inconvenience caused while work takes place. Anyone needing further information should ring Call Derbyshire on 01629 533190.  
The County Council intends to make an Order under Section 14 of the Road Traffic Regulation Act 1984 (as amended) to prohibit its use by traffic.  
Chris Hemming, Executive Director - Place Department, County Hall, MATLOCK DE4 3EG

**DERBYSHIRE COUNTY COUNCIL TEMPORARY ROAD CLOSURE SCROPTON ROAD, SCROPTON**

WHEN: 22nd April 2022 (09:30 to 15:30)  
WHERE: Scropton Road, Scropton between points 200m and 250m east of its junction with Firs Farm Nursery.  
REASON: To facilitate access to overhead cables outside 2839A pole The Firm 2839.  
ALTERNATIVE ROUTE: Main Street, Watery Lane, A511 Ubbeston Road / Station Road and vicar versa.  
Access will be maintained, whenever reasonably possible, on the affected length of road. The road will re-open as soon as the work is finished. This may be earlier than advertised.  
Derbyshire County Council apologises for any inconvenience caused while work takes place. Anyone needing further information should ring Call Derbyshire on 01629 533190.  
The County Council intends to make an Order under Section 14 of the Road Traffic Regulation Act 1984 (as amended) to prohibit its use by traffic.  
Chris Hemming, Executive Director - Place Department, County Hall, MATLOCK DE4 3EG

Any item any price free online.



The best place to sell your brick-a-brack

**Self-Serve online**  
Any item any price free online  
marketplace live.co.uk  
Your marketplace to buy and sell



# Burton Mail – 7 April – Run of paper advert

## Section 47(6) Planning Act 2008

### Notification of Statement of Community Consultation for Oaklands Farm Solar Project

#### Notice publicising a Statement of Community Consultation

Oaklands Farm Solar Limited (a wholly owned subsidiary of BayWa r.e. UK Ltd) (BayWa) has published a Statement of Community Consultation (SoCC) in accordance with Section 47(6) of the Planning Act 2008 (as amended by section 134 of the Localism Act 2022) (the Act).

BayWa is seeking a Development Consent Order (DCO) for the development of Oaklands Farm Solar in South Derbyshire. A DCO is required due to the Project's potential generating capacity of over 50MW, and its classification as a Nationally Significant Infrastructure Project (NSIP).

The DCO would authorise the construction, operation and maintenance of a 163MW solar farm and 37.5MW energy storage facility on land between Walton on Trent and Roston, South Derbyshire, along with all associated infrastructure including a grid connection at the former Drakeflow power station.

The Project is an Environmental Impact Assessment (EIA) development therefore an Environmental Statement (ES) will accompany the application to the Planning Inspectorate.

The Applicant has a duty to consult with local communities before the application is submitted to the Planning Inspectorate. The Applicant is also required to produce a Consultation Report detailing how the public's views have been taken into consideration and how the consultation requirements of the Act have been complied with. The SoCC sets out how BayWa will consult local communities, residents, businesses and organisations in the vicinity of the Project and all associated infrastructure.

Following publication of the SoCC, BayWa will undertake a statutory period of consultation and invite comments on the Project between the 21st April 2022 and 6th June 2022.

The SoCC is available for inspection, free of charge as follows:

- On the Project website: [www.baywa-re.co.uk/en/solar/oaklands-solar-farm](http://www.baywa-re.co.uk/en/solar/oaklands-solar-farm)
- In hard copy format at the following locations:

Location	Opening Times**
<b>Swadlincote Library and Information Centre</b> Address: Swadlincote Library, Civic Way, Swadlincote, Derbyshire DE11 0AD Email: swadlincote.library@derbyshire.gov.uk	Monday: 9.30am - 5pm Tuesday: 9.30am - 5pm Wednesday: 9.30am - 5pm Thursday: 9.30am - 7pm Friday: 9.30am - 5pm Saturday: 9.30am - 4pm Sunday: Closed
<b>Barton Under Needwood Community Library</b> Address: Barton Under Needwood Library, Dunstall Road, Barton Under Needwood, Staffordshire DE13 8AX Email: bartonlibrary@staffordshire.gov.uk	Monday: 10am - 12pm / 2pm - 5pm Tuesday: Closed Wednesday: 10am - 12pm / 2pm - 5pm Thursday: 10am - 12pm / 2pm - 5pm Friday: 10am - 2pm Saturday: 10am - 1pm Sunday: Closed
<b>Barton Library</b> Address: Barton Library, Riverside, Barton upon Trent, Staffordshire DE14 1AH Email: bartonlibrary@staffordshire.gov.uk	Monday: 9am - 6pm Tuesday: 9am - 5pm Wednesday: 9am - 5pm Thursday: 9am - 4pm Friday: 9am - 5pm Saturday: 8.30am - 4.30pm Sunday: Closed

\*\*The opening times of these organisations are dependent on and are governed by them and may be subject to change. Check websites for updates.



#### Public information Days during statutory consultation

We are interested in hearing your views on the Project and will be undertaking formal (statutory) consultation between 21st April 2022 and 6th June 2022. We will be holding public consultation events during the consultation period where members of the project team will be available to discuss the proposals and answer any questions you may have. Materials including maps, visual aids and explanatory information will be available for review and comment during the consultation dates set out above. Exhibitions will take place at the following dates and locations:

**Walton on Trent Village Hall**  
3-4 Main St, Walton-on-Trent, Swadlincote, DE12 8LZ  
Friday 6th May 2022 - 1pm to 7pm

**Roston & Cauldwell Village Hall**  
Main Street, Roston, Swadlincote, Derbyshire, DE12 8JW  
Saturday 7th May 2022 - 12noon to 4pm

#### How to have your say

Details of the statutory consultation and how to be involved are set out in the SoCC. **Please note: consultation documents will only be available from the start of the consultation on 21st April 2022.** Any responses or representations in respect of the Project can be made during the consultation period via the feedback form (available at events, above noted locations, on the project website and upon request) or in writing via:

- Email – [info.oaklands-solarfarm@baywa-re.co.uk](mailto:info.oaklands-solarfarm@baywa-re.co.uk)
- Feedback forms – available online via the project website ([www.baywa-re.co.uk/en/solar/oaklands-solar-farm](http://www.baywa-re.co.uk/en/solar/oaklands-solar-farm)) and consultation events. Alternatively, get in touch to request a hard copy and we will post it to you
- Freepost – FREEPOST TO CONSULTATION (no further address or stamp required)
- Virtual Exhibition – accessible via: [www.baywa-re.co.uk/en/solar/oaklands-solar-farm](http://www.baywa-re.co.uk/en/solar/oaklands-solar-farm)

If you have any queries about the consultation process you can call **0800 699 0081** (Freephone - Monday to Friday 9am to 5pm excluding public holidays)

**The deadline date for comments is 11.59pm 6th June 2022**

Should the SoCC or associated documents be required in a different format (e.g. large text), please contact the Applicant using any of the methods above.

# Allergic to where you live?

Warmer weather can bring allergy misery for some of us. **SAM WYLIE-HARRIS** gets tips on easing the problems

WHETHER it's dust, pet hair or household toxins, we're surrounded by potential irritants. And as the spring sunshine means we're throwing open the windows again – it's not just fresh air you could be letting in, but pollen from the plants outdoors.

So, how do you improve air quality and filter out allergens?

## Regular vacuuming

Carpets, sofas and soft furnishings are a magnet for debris and dust mites and a breeding ground for bacteria. Pet hair gets trapped between seating and cushions, not to mention what their paws bring in, all potentially increasing allergens in the home.

Some vacuum cleaners are designed to help with this, such as the award-winning Henry Allergy (£200, Argos) or a vacuum with a comprehensive filtration system, such as the Miele Boost CX1 Cat & Dog Powerline Cylinder Vacuum Cleaner (£359, Marks Electrical), which is fitted with a HEPA Air Clean filter to help get rid of fine dust particles and allergens.



## Keep your blinds clean and bright

It's easy to forget about curtains and blinds – but they can also harbour problems, so it's important to keep blinds clean, and curtains should be cleaned at least every six months.

"Ideally, you should clean blinds once a month to get rid of dust or dirt," says Helen O'Connor, product manager at 247 Blinds. "However, during these spring months, it's especially important to remove pollen that may be lingering on the surface. If you have roller blinds or roman blinds, start with a soft dusting and gentle vacuum, using the brush attachment.

"For venetian blinds or plantation shutters wipe each slat using a damp cloth and washing up liquid, then finish with a dusting to ensure they're

pollen-free. If you have slatted blinds, turn these daily to reduce pollen building up on the surface."

## Consider your cleaning products

Harsh disinfectant wipes and cleaning solutions can irritate skin. Award-winning brand TINCTURE has cleaning and home products that are 100% non-toxic, antibacterial, biodegradable natural, antiviral, and sustainably sourced.

"The natural ingredients we use, for instance eucalyptus and frankincense, are naturally antiviral and antibacterial and, most importantly, non-toxic," says founder Angelika Davenport. "A little goes a long way."

The All Purpose TINCTURE (from £4.99 for 475ml) can be used on all surfaces and has a springtime scent.



For people with allergies a home can be more hell than heaven

## Your Home

you sleep at night," explains Chris. "Skin conditions such as eczema don't like it when the skin starts to warm up and perspire, which causes irritation around those sensitive points of the skin. Wool works wonders absorbing excess moisture around the sleeper during the night, and then releasing naturally into the atmosphere during the day, maintaining a dry environment that deters house dust mites, dust mite allergens (called DERPI) and fungal spores."

## A Clean sleeping environment

If sneezing, wheezing and itching disrupts your sleep, you may need to change your bedding.

"House dust mites and fungal spores can trigger a variety of conditions and symptoms, such as asthma, eczema, itchy or runny eyes, sneezing, blocked or runny noses, tight chest and many more," says Chris Tattersall, clean sleep environment expert and MD of Woolloom, whose wool bedding sets start from £142.18.

He says wool is naturally hypoallergenic, making it a helpful material choice for many people.

"What many people don't realise, is the key to managing allergies within the bedroom is choosing a fibre that doesn't trap or hold moisture whilst



## Purify the air

"Surprisingly, indoor air can be up to five times more polluted than outdoor air, – particularly noticeable as we enter hay fever season, as pollen and other allergens become trapped in the home," says Alexander Provis, EMEA director, of air purification solutions provider Blueair.

One of the most effective ways to tackle this is to run a high-performing air purifier from April to June.

"The Blueair DustMagnet (from £349), captures and removes airborne dust before it settles," explains Alexander. "In addition to dust, it effectively inactivates bacteria and viruses and removes 99.97% of allergens, pollen, mould, pet dander and microplastics as small as 0.1 microns from the air, thanks to Blueair's HEPASilent technology."

## Section 47(6) Planning Act 2008

# Notification of Statement of Community Consultation for Oaklands Farm Solar Project

## Notice publicising a Statement of Community Consultation

Oaklands Farm Solar Limited (a wholly owned subsidiary of BayWa r.e. UK Ltd) (BayWa) has published a Statement of Community Consultation (SoCC) in accordance with Section 47(6) of the Planning Act 2008 (as amended by section 134 of the Localism Act 2022) (the Act).

BayWa is seeking a Development Consent Order (DCO) for the development of Oaklands Farm Solar in South Derbyshire. A DCO is required due to the Project's potential generating capacity of over 50MW, and its classification as a Nationally Significant Infrastructure Project (NSIP).

The DCO would authorise the construction, operation and maintenance of a 103MW solar farm and 37.5MW energy storage facility on land between Walton on Trent and Roslinton, South Derbyshire, along with all associated infrastructure including a grid connection at the former Drakelow power station.

The Project is an Environmental Impact Assessment (EIA) development therefore an Environmental Statement (ES) will accompany the application to the Planning Inspectorate.

The Applicant has a duty to consult with local communities before the application is submitted to the Planning Inspectorate. The Applicant is also required to produce a Consultation Report detailing how the public's views have been taken into consideration and how the consultation requirements of the Act have been complied with. The SoCC sets out how BayWa will consult local communities, residents, businesses and organisations in the vicinity of the Project and all associated infrastructure.

Following publication of the SoCC, BayWa will undertake a statutory period of consultation and invite comments on the Project between the 21st April 2022 and 6th June 2022.

The SoCC is available for inspection, free of charge as follows:

- On the Project website: [www.baywa-re.co.uk/en/solar/oaklands-solar-farm](http://www.baywa-re.co.uk/en/solar/oaklands-solar-farm)
- In hard copy format at the following locations:

Location	Opening Times**
<b>Swadincote Library and Information Centre</b> Address: Swadincote Library, Cude Wy, Swadincote, Derbyshire DE11 6AD Email: <a href="mailto:swadincote.library@derbyshire.gov.uk">swadincote.library@derbyshire.gov.uk</a>	Monday: 9.30am - 5pm Tuesday: 9.30am - 6pm Wednesday: 9.30am - 5pm Thursday: 9.30am - 7pm Friday: 9.30am - 6pm Saturday: 9.30am - 4pm Sunday: Closed
<b>Barton Under Needwood Community Library</b> Address: Barton Under Needwood Library, Dunstall Road, Barton-under-Needwood, Staffordshire DE13 8AX Email: <a href="mailto:barton.library@staffordshire.gov.uk">barton.library@staffordshire.gov.uk</a>	Monday: 10am - 12pm / 2pm - 6pm Tuesday: Closed Wednesday: 10am - 12pm / 2pm - 6pm Thursday: 10am - 12pm / 2pm - 6pm Friday: 10am - 2pm Saturday: 10am - 1pm Sunday: Closed
<b>Burton Library</b> Address: Burton Library, B-venue, Burton upon Trent, Staffordshire DE14 1AH Email: <a href="mailto:burton.library@staffordshire.gov.uk">burton.library@staffordshire.gov.uk</a>	Monday: 9am - 6pm Tuesday: 9am - 5pm Wednesday: 9am - 5pm Thursday: 9am - 7pm Friday: 9am - 5pm Saturday: 9.30am - 4.30pm Sunday: Closed

\*The opening times of these organisations are dependent on and are governed by them and may be subject to change.  
\*\*Please refer to this notice.



## Public information Days during statutory consultation

We are interested in hearing your views on the Project and will be undertaking formal (statutory) consultation between 21st April 2022 and 6th June 2022. We will be holding public consultation events during the consultation period where members of the project team will be available to discuss the proposals and answer any questions you may have. Materials including maps, visual aids and explanatory information will be available for review and comment during the consultation dates set out above. Exhibitions will take place at the following dates and locations:

<b>Walton on Trent Village Hall</b> 34 Main St, Walton-on-Trent, Swadincote, DE12 8LZ Friday 6th May 2022 - 1pm to 7pm	<b>Roslinton &amp; Cauldwell Village Hall</b> Main Street, Roslinton, Swadincote, Derbyshire, DE12 8JW Saturday 7th May 2022 - 12noon to 4pm
--	--

## How to have your say

Details of the statutory consultation and how to be involved are set out in the SoCC. Please note: consultation documents will only be available from the start of the consultation on 21st April 2022. Any responses or representations in respect of the Project can be made during the consultation period via the feedback form (available at events, above noted locations, on the project website and upon request) or in writing via:

- Email – [info.oaklands-solarfarm@baywa-re.co.uk](mailto:info.oaklands-solarfarm@baywa-re.co.uk)
  - Feedback forms – available online via the project website ([www.baywa-re.co.uk/en/solar/oaklands-solar-farm](http://www.baywa-re.co.uk/en/solar/oaklands-solar-farm)) and consultation events. Alternatively, get in touch to request a hard copy and we will post it to you
  - Freepost – FREEPOST TO CONSULTATION (no further address or stamp required)
  - Virtual Exhibition – accessible via: [www.baywa-re.co.uk/en/solar/oaklands-solar-farm](http://www.baywa-re.co.uk/en/solar/oaklands-solar-farm)
- If you have any queries about the consultation process you can call 0800 699 0061 (Freephone – Monday to Friday 9am to 5pm, excluding public holidays)

**The deadline date for comments is 11.59pm 6th June 2022**

Should the SoCC or associated documents be required in a different format (e.g. large text), please contact the Applicant using any of the methods above.



Derbyshire Live (Covering Burton Mail & Derby Telegraph) – 7 April 2022 to 30 April 2022 - Online Adverts



 **BayWa r.e.**

**Public information days during statutory consultation**

We are interested in hearing your views on the Project and will be undertaking formal (statutory) consultation **between 21st April 2022 and 6th June 2022.**


[FIND OUT MORE](#)

 **BayWa r.e.**

**Public information days during statutory consultation**

We are interested in hearing your views on the Project and will be undertaking formal (statutory) consultation **between 21st April 2022 and 6th June 2022.**

[FIND OUT MORE](#)



 **BayWa r.e.**

**Public information days during statutory consultation**

We are interested in hearing your views on the Project and will be undertaking formal (statutory) consultation **between 21st April 2022 and 6th June 2022.**

[FIND OUT MORE](#)



 **BayWa r.e.**

**Public information days during statutory consultation**

We are interested in hearing your views on the Project and will be undertaking formal (statutory) consultation **between 21st April 2022 and 6th June 2022.**

[FIND OUT MORE](#)



# BayWa re.

## Public information days during statutory consultation

We are interested in hearing your views on the Project and will be undertaking formal (statutory) consultation between 21st April 2022 and 6th June 2022.

[FIND OUT MORE](#)

DerbyshireLive

NEWS - IN YOUR AREA BURTONLIVE CHESTERFIELD LIVE MORE -

KICK-MIX

WIN YOUR KID'S FOOTBALL TEAM A BRAND NEW KIT FOR NEXT SEASON

Red Bull

BUY A PAPER FUNERAL NOTICES JOBS BOOKING AD BUY A PHOTO ADVERTISE WITH US VOUCHER CODES MARKETPLACE DIRECTORY PUBLICATIONS DATING NEWSLETTER SIGNUP



## NEWS

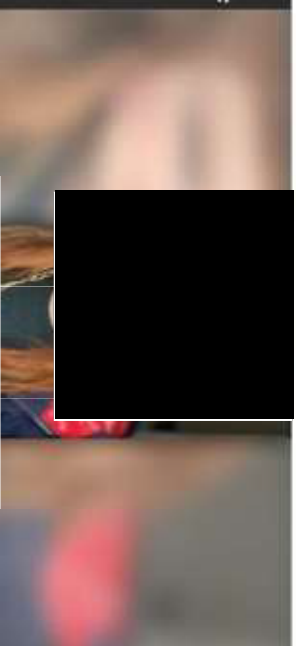
**BayWa re.**  
Public information days during statutory consultation  
We are interested in hearing your views on the Project and will be undertaking formal (statutory) consultation between 21st April 2022 and 6th June 2022.  
[FIND OUT MORE](#)



Privacy

Luce Fest event announced in memory of Derbyshire crash victim

PEOPLE



**BayWa re.**  
Public information days during statutory consultation  
We are interested in hearing your views on the Project and will be undertaking formal (statutory) consultation between 21st April 2022 and 6th June 2022.

**BayWa re.**  
Public information days during statutory consultation  
We are interested in hearing your views on the Project and will be undertaking formal (statutory) consultation between 21st April 2022 and 6th June 2022.  
[FIND OUT MORE](#)

